

REVERSO

VALVOLA A SFERA CON ATTACCO MULTISTRATO
BALL VALVE WITH MULTILAYER PIPE CONNECTION

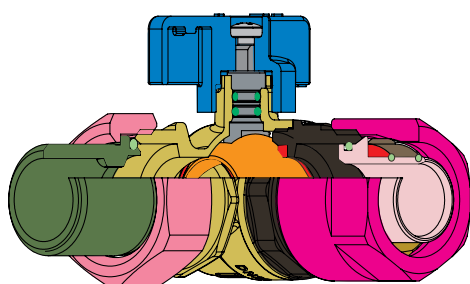


SPECIFICA MATERIALI MATERIAL SPECIFICATION

PARTICOLARI COMPONENT

MATERIALI MATERIAL

DESCRIZIONE DESCRIPTION



GUARDA IL VIDEO / WATCH THE VIDEO



 CORPO BODY	CW 617 N UNI EN 12165	STAMPATO DA BARRA, NICHELATO Forged, Nickel-Plated
 MANICOTTO END ADAPTER	CW 617 N UNI EN 12165	STAMPATO DA BARRA, NICHELATO Forged, Nickel-Plated
 SFERA BALL	CW 614 N UNI EN 12164 +PTFE	DA BARRA + RIVESTIMENTO Machined + Coating
 ANELLO ISOLANTE/ SEDI LATERALI INSULATING RING/ BALL GASKET	PTFE	VERGINE Virgin
 PERNO STEM	CW 614 N UNI EN 12164	DA BARRA Machined
 O-RINGS	NBR	ADATTO ALL'USO PER ACQUA Suitable For Use With Water
 VITE SCREW	ACCIAIO Steel	ZINCATA Zinc-Plated
 LEVETTA HANDLE	ALLUMINIO Aluminium	VERNICIATA Painted
 GIRELLO NUT	CW 617 N UNI EN 12165	STAMPATO DA BARRA, NICHELATO Forged, Nickel-Plated
 CODOLO TANG	CW 617 N UNI EN 12165	STAMPATO DA BARRA, NICHELATO Forged, Nickel-Plated
 OGIVA OGIVE	CW 614 N UNI EN 12164	DA BARRA Machined
 INSERTO TUBO TUBE INSERT	CW 614 N UNI EN 12164	DA BARRA Machined
 DADO NUT	CW 617 N UNI EN 12165	STAMPATO DA BARRA, NICHELATO Forged, Nickel-Plated
 O-RINGS	EPDM Perossidico EPDM Peroxide	ADATTO ALL'USO PER ACQUA Suitable For Use With Water

FILETTATURE

Estremità filettate UNI ISO 228.

END CONNECTIONS

Threaded ends UNI ISO 228.

IMPIEGHI

Valvole a sfera con attacco per tubo multistrato.
Adatte per l'uso con acqua calda e fredda.
Per utilizzi speciali vedere le tabelle di compatibilità.

APPLICATIONS

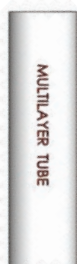
Ball valves for connection with multi-layer pipes.
Suitable for hot and cold water.
For special uses please see the chemical resistance tables.

LIMITI DI TEMPERATURA

Da -20°C a + 100°C.

TEMPERATURE LIMITS

From -20°C to + 100°C.



1

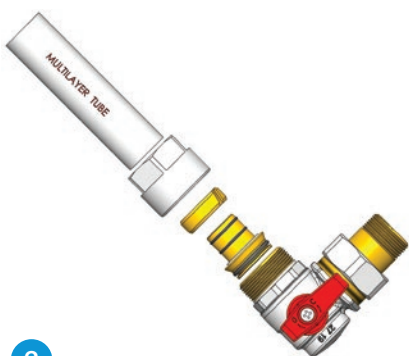
TUBO: Eseguire il taglio del tubo perpendicolare al suo asse.

Calibrare e sbavare il tubo con apposito calibro facendo attenzione ad eliminare eventuali trucioli residui. Lo smusso interno deve essere compiuto su tutta la circonferenza.

PIPE: Cut perpendicularly.

Calibrate and deburr the tube with a calibrator, taking care to remove any residual chips.

The internal chamfer must be around the entire rim.



2

Preparare i componenti nell'ordine come in figura.

Prepare the components in the order shown.



3

Inserire prima il dado poi l'ogiva sul tubo.
Inserire il tubo a battuta dell'innesto.

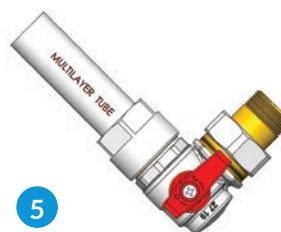
Insert the nut first and then the nosepiece on the pipe. Insert the pipe into the socket.



4

Inserire l'innesto con tutto il premontato nell'apposita sede della valvola.

Insert the plug with all pre-assembled parts into the valve seat.



5

Avvitare manualmente il dado per quanto consentito. Con chiave avvitare il dado per altro 1/2 giro (+1/4 giro max).

Tighten the nut by hand as far as possible. Use a spanner to tighten the nut by further 1/2 turn (+1/4 turn max).

REVERSO

VALVOLA A SFERA CON ATTACCO MULTISTRATO BALL VALVE WITH MULTILAYER PIPE CONNECTION

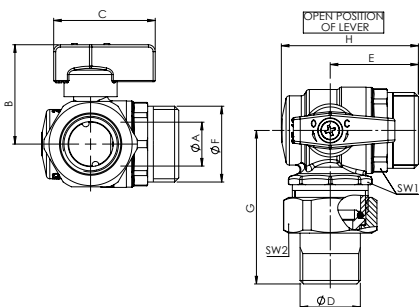
S3228 REVERSO

NEW



CODICE CODE	MISURA SIZE	LEVA LEVER	PN Bar	øA	B	C	øD	E	øF	G±2	H	SW1-2	Box Crt
S3228N20	¾" x 1" (DN20)	ROSSA Red	40	20	43,5	44	¾"	38	1"	72	59	34-37	10/40
S3228N06	1" x 1" (DN20)	ROSSA Red	40	20	43,5	44	1"	38	1"	72	59	34-37	10/40
S3228B20	¾" x 1" (DN20)	BLU Blue	40	20	43,5	44	¾"	38	1"	66,5	59	34-37	10/40
S3228B06	1" x 1" (DN20)	BLU Blue	40	20	43,5	44	1"	38	1"	66,5	59	34-37	10/40

Valvola a squadra con sfera teflonata con attacco M/bocchettone, levetta frontale rossa o blu, nichelata. (Tenuta O-Ring).
Angle ball valve male/pipe connection with teflon-coated ball, red or blue lever, nickel-plated.



S3223 REVERSO

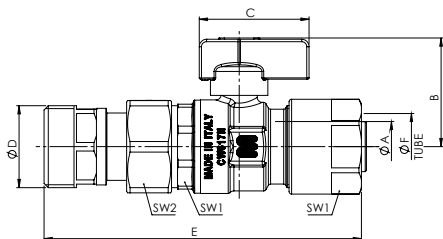
NEW



CODICE CODE	MISURA SIZE	LEVA LEVER	PN Bar	øA	B	C	D	E±5	øF	SW1-2	Box Crt
S3223N17	¾" x ø 26 (DN20)	ROSSA Red	10	20	43,5	44	¾"	120	26x3	34-37	5/25
S3223N22	1" x ø 26 (DN20)	ROSSA Red	10	20	43,5	44	1"	127	26x3	34-37	5/25
S3223B17	¾" x ø 26 (DN20)	BLU Blue	10	20	43,5	44	¾"	120	26x3	34-37	5/25
S3223B22	1" x ø 26 (DN20)	BLU Blue	10	20	43,5	44	1"	127	26x3	34-37	5/25

Temperatura: - 20°C/+90°C
-20° solo con glicole in % max del 30%
Temperature: - 20°C/+90°C
-20° only with glycol in % max 30%

Valvola con attacco bocchettone/multistrato, con sfera teflonata, levetta rossa o blu, nichelata. (Tenuta O-Ring).
Ball valve multilayer/pipe connection with teflon-coated ball, red or blue lever, nickel-plated.



REVERSO

VALVOLA A SFERA CON ATTACCO MULTISTRATO BALL VALVE WITH MULTILAYER PIPE CONNECTION

S3224 REVERSO

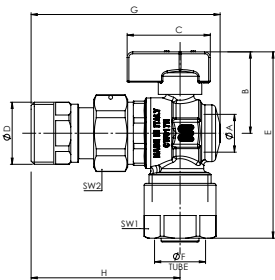
NEW



Temperatura: - 20°C/+90°C
-20° solo con glicole in % max del 30%
Temperature: - 20°C/+90°C
-20° only with glycol in % max 30%

CODICE CODE	MISURA SIZE	LEVA LEVER	PN Bar	øA	B	C	D	E±5	øF	G	H	SW1-2	Box Crt
S3224N17	¾" x ø 26 (DN20)	ROSSA Red	10	20	43,5	44	¾"	101	26x3	88,5	67,5	34-37	5/25
S3224N22	1" x ø 26 (DN20)	ROSSA Red	10	20	43,5	44	1"	101	26x3	100	79	34-37	5/25
S3224B17	¾" x ø 26 (DN20)	BLU Blue	10	20	43,5	44	¾"	101	26x3	88,5	67,5	34-37	5/25
S3224B22	1" x ø 26 (DN20)	BLU Blue	10	20	43,5	44	1"	101	26x3	100	79	34-37	5/25

Valvola a squadra con attacco bocchettone/multistrato, con sfera teflonata, levetta rossa o blu, nichelata. (Tenuta O-Ring).
Angle ball valve multilayer/pipe connection with teflon-coated ball, red or blue lever, nickel-plated.



S0223 REVERSO

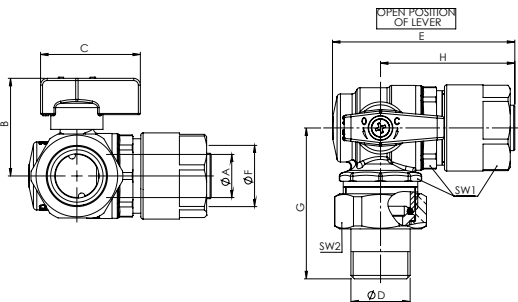
NEW



Temperatura: - 20°C/+90°C
-20° solo con glicole in % max del 30%
Temperature: - 20°C/+90°C
-20° only with glycol in % max 30%

CODICE CODE	MISURA SIZE	LEVA LEVER	PN Bar	øA	B	C	D	E±2	øF	G±2	H	SW1-2	Box Crt
S0223N17	¾" x ø 26 (DN20)	ROSSA Red	10	20	43,5	44	G ¾"	80	26	72	59	34-37	5/25
S0223N22	1" x ø 26 (DN20)	ROSSA Red	10	20	43,5	44	G 1"	80	26	72	59	34-37	5/25
S0223B17	¾" x ø 26 (DN20)	BLU Blue	10	20	43,5	44	G ¾"	80	26	66,5	59	34-37	5/25
S0223B22	1" x ø 26 (DN20)	BLU Blue	10	20	43,5	44	G 1"	80	26	66,5	59	34-37	5/25

Valvola a squadra con sfera teflonata con attacco bocchettone/multistrato tubo 26 mm, levetta frontale rossa o blu, nichelata. (Tenuta O-Ring).
Angle ball valve multilayer/pipe connection ø26mm with teflon-coated ball, red or blue lever, nickel plated.



REVERSO

VALVOLA A SFERA CON ATTACCO MULTISTRATO BALL VALVE WITH MULTILAYER PIPE CONNECTION

S0222 REVERSO

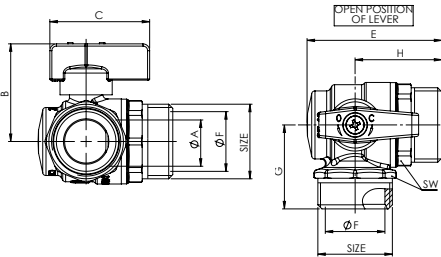
NEW



CODICE CODE	MISURA SIZE	LEVA LEVER	PN Bar	øA	B	C	D	E	F	G	H	SW	Box Crt
S0222N06	1" x 1" (DN20)	ROSSA Red	40	20	43,5	44	11,5	59,4	26,3	37	38,2	34	10/50
S0222B06	1" x 1" (DN20)	BLU Blue	40	20	43,5	44	11,5	59,4	26,3	37	38,2	34	10/50

Temperatura: - 20°C/+100°C
Temperature: - 20°C/+100°C

Valvola a squadra nichelata con sfera teflonata con attacco M/M, levetta frontale. (Tenuta O-Ring).
Angle ball valve male/male connection with teflon-coated ball, lever, nickel-plated.



S3222 REVERSO

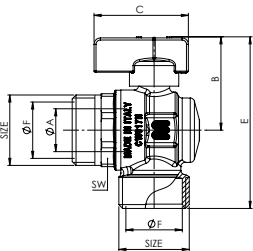
NEW



CODICE CODE	MISURA SIZE	LEVA LEVER	PN Bar	øA	B	C	D	E	øF	SW	Box Crt
S3222N06	1" x 1" (DN20)	ROSSA Red	50	20	43,5	44	11,5	80	26	34	10/50
S3222B06	1" x 1" (DN20)	BLU Blue	50	20	43,5	44	11,5	80	26	34	10/50

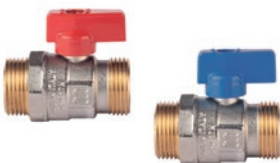
Temperatura: - 20°C/+100°C
Temperature: - 20°C/+100°C

Valvola a squadra nichelata con sfera teflonata con attacco M/bocchettone, levetta blu. (Tenuta O-Ring).
Angle ball valve male/pipe connection with teflon-coated ball, blue lever, nickel-plated.



S3221 REVERSO

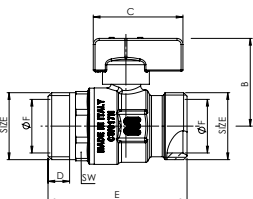
NEW



CODICE CODE	MISURA SIZE	LEVA LEVER	PN Bar	øA	B	C	D	E	øF	SW	Box Crt
S3221N06	1" x 1" (DN20)	ROSSA Red	50	20	43,5	44	11,5	70	26	34	10/50
S3221B06	1" x 1" (DN20)	BLU Blue	50	20	43,5	44	11,5	70	26	34	10/50

Temperatura: - 20°C/+100°C
Temperature: - 20°C/+100°C

Valvola a squadra nichelata con attacco M/M, con sfera teflonata. (Tenuta O-Ring).
Angle ball valve male/male connection with teflon-coated ball, lever, nickel-plated.



REVERSO

VALVOLA A SFERA CON ATTACCO MULTISTRATO BALL VALVE WITH MULTILAYER PIPE CONNECTION

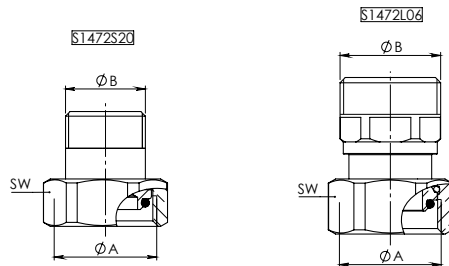
S1472 REVERSO

NEW



Per Serie Reverso
For Reverso Line

Temperatura: - 20°C/+90°C
Temperature: - 20°C/+90°C



CODICE CODE	MISURA SIZE	ØA	ØB	SW	Box Crt
S1472S20	1" x ¾" (DN20)	1"	¾"	37	5/50
S1472L06	1" x 1" (DN20)	1"	1"	37	5/50

Bocchettone girello/M. (Tenuta O-Ring NBR).
Pipe nut/male (O-ring NBR).

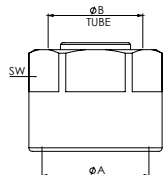
R0721

NEW



Per Serie Reverso
For Reverso Line

Temperatura: - 20°C/+90°C
-20° solo con glicole in % max del 30%
Temperature: - 20°C/+90°C
-20° only with glycol in % max 30%

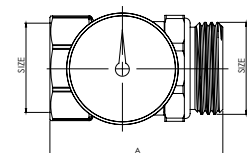


CODICE CODE	MISURA SIZE	PN Bar	ØA	ØB	SW	Box Crt
R0721N22	1" x Ø 26 x 3	10	1"	Ø26x3	34	5/40
R0721N20	1" x Ø 20 x 2	10	1"	Ø20x2	34	5/40

Raccordo tubo multistrato (Tenuta O-Ring).
Multilayer connection

H0700

NEW



CODICE CODE	MISURA SIZE	A	Pcs. Box/Crt
H0700N06	1"MF	62	5/25

Raccordo intermedio 1" con termometro.
Temperature gauge fitting

